

# NI-CAS Software Installation and Activation

## Software Download

NI-CAS software for development and deployment require the software below to be downloaded, installed and activated.

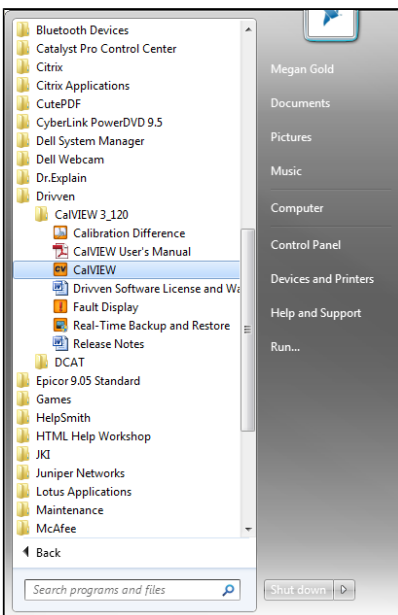
Release Version	Download Location
DAQmx 9.6	<a href="http://joule.ni.com/nidu/cds/view/p/id/3423/lang/en">http://joule.ni.com/nidu/cds/view/p/id/3423/lang/en</a>
LabVIEW Run-Time 2012	<a href="http://joule.ni.com/nidu/cds/view/p/id/3433/lang/en">http://joule.ni.com/nidu/cds/view/p/id/3433/lang/en</a>
CalVIEW 3.120	<a href="http://ftp.ni.com/evaluation/labview/lvtn/toolkits/drivven/CalVIEW.zip">http://ftp.ni.com/evaluation/labview/lvtn/toolkits/drivven/CalVIEW.zip</a>
DCAT 3.120	<a href="http://www.drivven.com/visitor_download/Software/DCAT3.120.zip">http://www.drivven.com/visitor_download/Software/DCAT3.120.zip</a>

## Requesting Activation Information

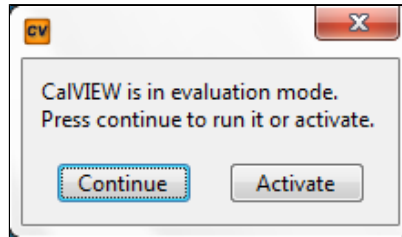
Within 48 hours of purchase an email will be generated with activation information from the LabVIEW Tools Network. For software reactivation or new activation issues please email [powertraincontrolsinfo@ni.com](mailto:powertraincontrolsinfo@ni.com) or see the **Troubleshooting** section in the [NI-CAS Software Manual](#).

## CalVIEW Activation

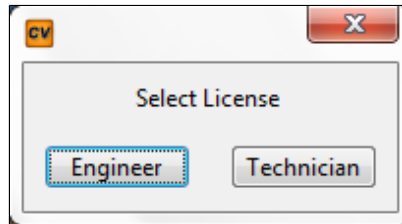
After receiving an email from NI with a License ID and Password (case sensitive), to activate the software, launch the CalVIEW console from the Windows™ startup menu.



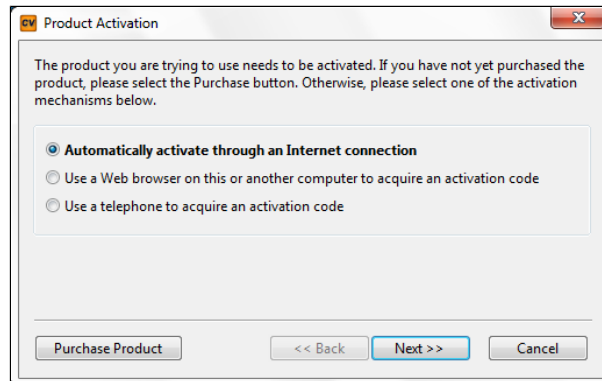
If not activated, it will inform the user that it is in evaluation mode and prompt the user to either **Continue** in evaluation mode, or **Activate**. Select **Activate**.



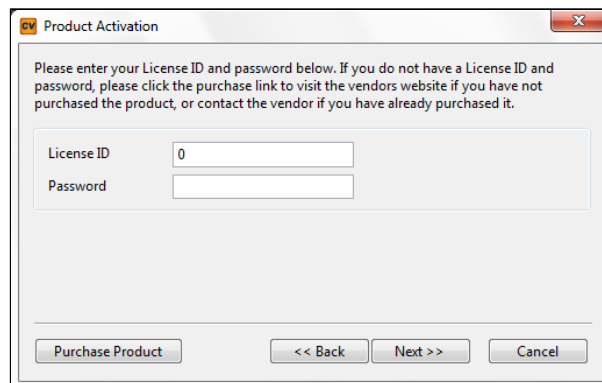
When prompted to select license, select **Engineer** for NI-CAS for Development or **Technician** for NI-CAS for Deployment.



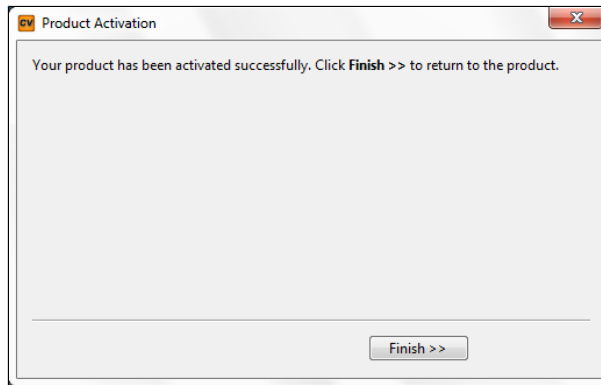
When prompted to select activation method, select **Automatically activate through an Internet connection**, and select **Next**. If an internet connection is not available see the **Troubleshooting** section in the [NI-CAS Software Manual](#).



When prompted, enter the activation **License ID** and **Password** provided by NI and select **Next**. Please be aware that the password is case sensitive.

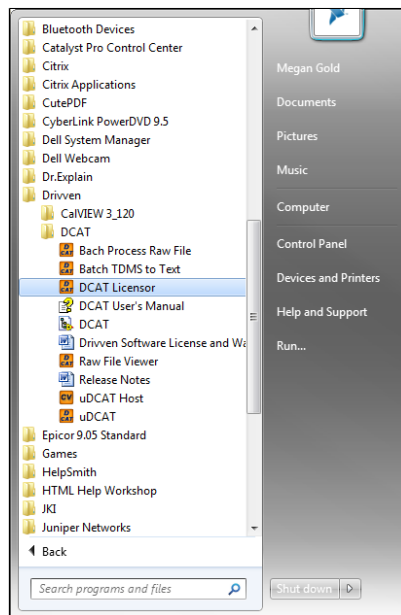


After successfully activating, the following final dialog will be shown. CalVIEW is now activated and may be used normally.

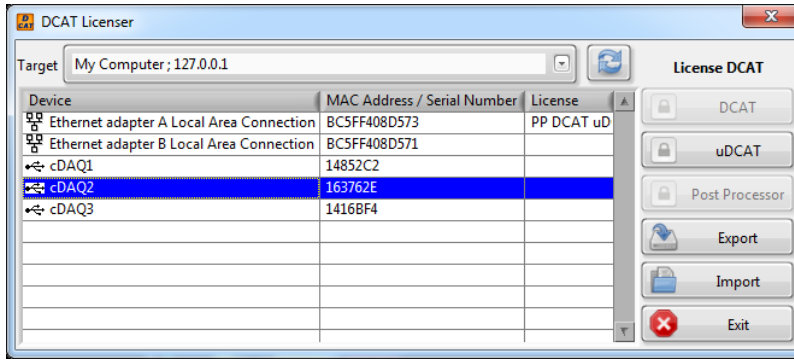


## NI-CAS Software Licensing

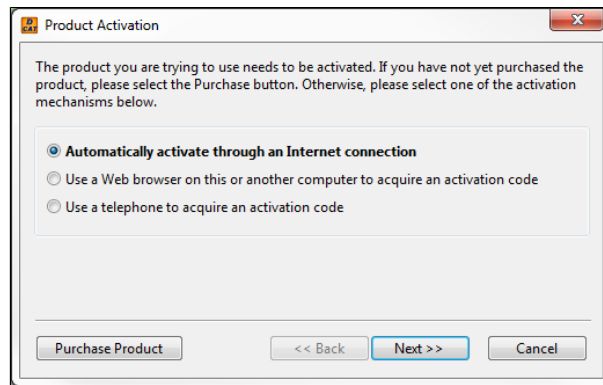
After installing NI-CAS Software, it must be activated in order to enable its components. The NI-CAS Software Licenser can be used to activate the Development License (formerly DCAT), Deployment License (formerly  $\mu$ DCAT) or the Post Processor. To activate a device, open the NI-CAS Software Licenser from the **Start Menu > Drivven > DCAT Licenser**.



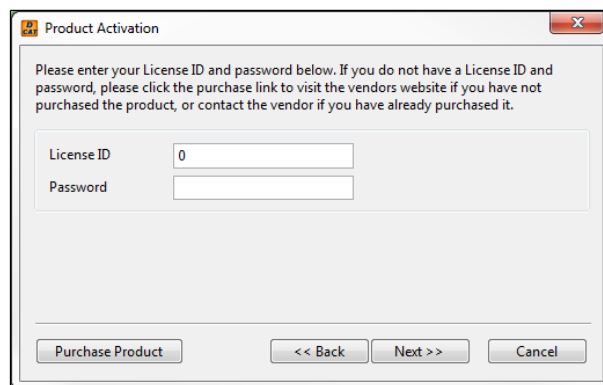
Connect system hardware and power on (remote systems must be located on the same subnet network). Select the desired target. If the target is not found in the list, press the refresh button. Remote systems must be located on the same subnet network and powered on. After selecting the target, select the device to be licensed. For NI-CAS for Development and the Post Processor, an ethernet adapter must be selected. For NI-CAS for Development, a DAQ device must be selected. Press the button on the right corresponding to the type of license purchased.



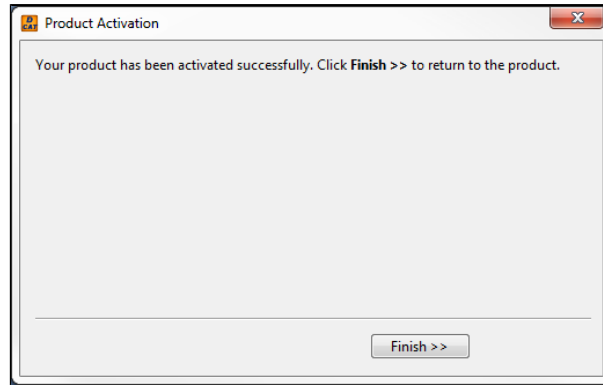
When prompted to select activation method, select **Automatically activate through an Internet connection**, and select **Next**. If an internet connection is not available see the **Troubleshooting** section in the [NI-CAS Software Manual](#).



When prompted, enter the activation **License ID** and **Password** provided by NI and select **Next**. Be aware that the password is case sensitive.



After successfully activating, the following final dialog will be shown. The software is now activated and may be used normally.



The license VI must be the first VI to run in a NI-CAS Software project. It will validate the NI-CAS Software license and unlock the remaining VIs.

## Import/Export

---

NI-CAS Software for Development: It is recommended to use the **Export** feature to save the license file located on the PXI controller to a safe remote location in the event the file is lost.

NI-CAS Software for Deployment: It is recommended to use the **Export** feature to save the license file located on the host computer to a safe remote location in the event the file is lost. To move licensing information to a new computer, first, **Export** the license file from the original host computer, then **Import** the license file to the new host computer after the software has been downloaded and installed.